

# BIOCLEAN CLEARVIEW

Autoclavable Goggles  
**BCAG2**

## About

Constructed in super-soft thermoplastic to provide unrivalled comfort, BioClean Clearview autoclavable cleanroom goggles feature upper vents and have a toughened anti-scratch, anti-fog polycarbonate lens for clear vision.

## Specifications

### MATERIAL:

Thermoplastic frame, toughened polycarbonate lens, silicone latex-free head band with polypropylene hooks.

### COLOUR:

White frame and black strap

### CLASSIFICATION:

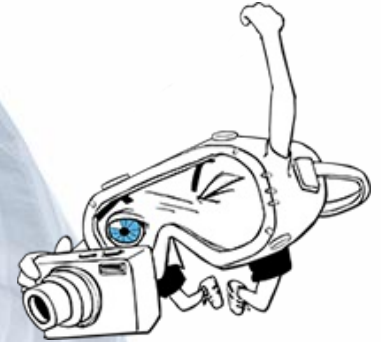
EN 166:2001 Optical Class 1

### COMPATIBILITY:

ISO Class 4 & EU GMP Grade A

## Features

- Super-soft thermoplastic frame
- Small upper vents for ventilation
- Toughened polycarbonate, anti-scratch, anti-fog, optically correct lens
- Non-linting latex-free head band
- Tested to withstand more than 40 autoclave cycles of 30 minutes duration at 121°C/250°F (under laboratory conditions)
- Anti-fog performance remaining for up to 25 cycles with no degradation (under laboratory conditions)
- Can be worn over eye glasses



Lens Gogglestrong® represents  
BioClean's range of GMP  
compatible Cleanroom goggles



OPTICALLY CORRECT

LIGHTWEIGHT THERMOPLASTIC FRAME

TOUGHENED ANTI-SCRATCH POLYCARBONATE LENS

## Quality Standards

- Manufactured in a facility holding ISO 9001:2015
- Processed in an NEBB certified ISO Class 4 cleanroom environment
- Conforms to Category 2 – Personal Protective Equipment Regulation (EU)2016/425
- Complies with requirements of EN 166:2001 standard for personal eye protection

### STERILIZATION:

Supplied non-sterile. To be autoclaved at 121°C/250°F for 30 minutes.

## Shelf Life & Storage

Five (5) years from date of manufacture. Store in a dry, cool place (<40°C) away from direct sunlight and fluorescent light.

## Physical Properties

Total Weight (± 2g)	103g
Lens Thickness (± 0.3mm)	3.1mm
Bridge Width (± 0.5mm)	70mm
Bridge Height (±0.5mm)	26mm
Overall Width (hinge to hinge)(±3mm)	190mm
Overall Height (± 3mm)	85mm

## TO ORDER

### Re-order code

BCAG2

### Size

Universal

### Packing

One goggle per PE bag (remove bag prior to autoclaving), 12 goggles per inner box, five boxes (60 goggles) per carton.

For additional information visit us at [www.bioclean.com](http://www.bioclean.com), or call us at +60 3 5569 3857/3859

### Nitritex (M) Sdn.Bhd

2 Jalan Jurunilai U1/20  
Seksyen U1, Hicom Glenmarie Industrial Park  
40150 Shah Alam, Selangor  
Malaysia

//1/APAC



Neither this document nor any other statement made herein by or on behalf of Ansell should be construed as a warranty of merchantability or that any Ansell product is fit for a particular purpose. Ansell assumes no responsibility for the suitability or adequacy of an end user's selection of goggles for a specific application.

Ansell, ® and TM are trademarks owned by Ansell Limited or one of its affiliates. © 2012 – 2019 Ansell Limited. All Rights Reserved.