

## “COMFORT & PROTECTION”



Exceptional comfort and protection

Excellent antistatic properties

Carefully researched, designed & constructed

Processed to ensure ISO Class 4 compatibility

Low-linting and durable

Thumb loop to ensure a secure hold



**MASTER CODE**

**S-BDCHT**

**SPECIFICATIONS**

ISO Class 4 compatible

**PACKAGING**

One coverall per sealed PE bag;  
One sealed PE bag per sealed outer PE bag;  
20 coveralls per carton liner;  
One carton liner per carton (20 coveralls);  
(XXXL & XXXXL 15 coveralls)

**PRODUCT CERTIFICATIONS**



GB10/81851

GB04/61092

UK e-mail: [info@nitritex.com](mailto:info@nitritex.com)  
Tel: +44 (0) 1638 663338  
Fax: +44 (0) 1638 668890  
Nitritex Ltd, CB8 7YY, United Kingdom



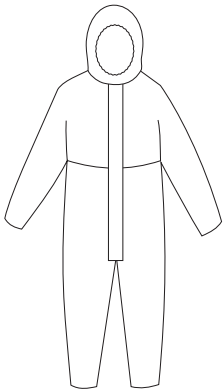
## MASTER CODE

# S-BDCHT

### RE-ORDER CODE SIZE

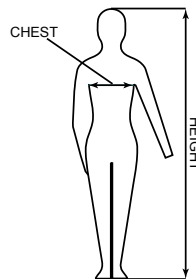
S-BDCHT-XS	XS
S-BDCHT-S	S
S-BDCHT-M	M
S-BDCHT-L	L
S-BDCHT-XL	XL
S-BDCHT-XXL	XXL
S-BDCHT-XXXL	XXXL
S-BDCHT-XXXXL*	XXXXL

## PRODUCT ILLUSTRATION



- COLOUR:** White
- FEATURES:** Zip front with flap cover. Thumb loops on wrist. Elasticated back, cuffs and ankles
- MATERIAL:** CleanTough™ fabric
- SURFACE RESISTANCE:** Typical outside surface 4.4 x 10<sup>11</sup>Ω  
Typical inside surface 4.0 x 10<sup>9</sup>Ω
- PRINTING:** IPA-resistant ink ensures that bags can be wiped down with cleaning or sterilizing fluids without fear of cross-contamination from printing inks
- QUALITY SYSTEMS:** Manufactured in a facility holding ISO 9001:2008 certification
- STERILIZATION METHOD:** Gamma irradiation
- SAMPLING & INSPECTION:** In accordance with ISO 2859
- STORAGE INSTRUCTIONS:** Store in a dry, cool place (<30°C) away from direct sunlight
- BAR CODES:** Each size carries a unique bar code on the carton (ITF-14) to allow automatic data entry into Stock Control Systems
- LOT NUMBER:** This is shown on each individual bag and the carton to provide product traceability
- COMPATIBILITY:** ISO Class 4
- PACKAGING:** One coverall per sealed PE bag;  
One sealed PE bag per sealed outer PE bag;  
20 coveralls per carton liner;  
One carton liner per carton (20 coveralls);  
(XXXL & XXXXL 15 coveralls)

### SIZE CHART:



### SIZING TABLE cm (ft/in)

Size	CHEST	HEIGHT
XS	76-84 (30"-33")	158-164 (5'2"-5'4")
S	84-92 (33"-36")	164-170 (5'4"-5'6")
M	92-100 (36"-39")	170-176 (5'6"-5'9")
L	100-108 (39"-42")	176-182 (5'9"-6'0")
XL	108-116 (42"-45")	182-188 (6'0"-6'2")
XXL	116-124 (45"-48")	188-194 (6'2"-6'4")
XXXL	124-132 (48"-51")	194-200 (6'4"-6'6")
*XXXXL	132-140 (51"-54")	200-206 (6'6"-6'8")

### NOTES:

\*S-BDCHT-XXXXL  
Non-stock item, minimum order 50 cartons

## Contacts:

EUROPE (Headquarters)  
MALAYSIA (Manufacturing)  
AMERICAS  
CHINA

europe@bioclean.com  
malaysia@bioclean.com  
americas@bioclean.com  
china@bioclean.com