

## “COMFORT & PROTECTION”



Exceptional comfort and protection

Excellent antistatic properties

Carefully researched, designed & constructed

Processed to ensure ISO Class 4 compatibility

Low-linting and durable

Thumb loop to ensure a secure hold

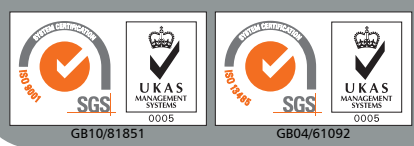
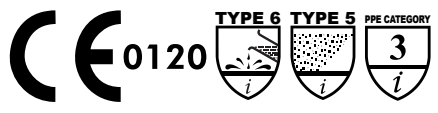


MASTER CODE	SPECIFICATIONS	PACKAGING	PRODUCT CERTIFICATIONS
-------------	----------------	-----------	------------------------

**BDCHT**

ISO Class 4 compatible

One coverall per sealed PE bag;  
One sealed PE bag per sealed outer PE bag;  
20 coveralls per carton liner;  
One carton liner per carton (20 coveralls);  
(XXXL & XXXXL 15 coveralls)



UK e-mail: [info@nitritex.com](mailto:info@nitritex.com)  
Tel: +44 (0) 1638 663338  
Fax: +44 (0) 1638 668890  
Nitritex Ltd, CB8 7YY, United Kingdom



GB10/81851

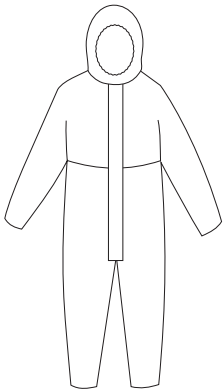
GB04/61092

## MASTER CODE

# BDCHT

RE-ORDER CODE	SIZE
BDCHT-XS	XS
BDCHT-S	S
BDCHT-M	M
BDCHT-L	L
BDCHT-XL	XL
BDCHT-XXL	XXL
BDCHT-XXXL	XXXL
BDCHT-XXXXL*	XXXXL

## PRODUCT ILLUSTRATION



- COLOUR:** White
- FEATURES:** Zip front with flap cover. Thumb loops on wrist. Elasticated back, cuffs and ankles
- MATERIAL:** CleanTough™ fabric
- SURFACE RESISTANCE:** Typical outside surface 4.4 x 10<sup>11</sup>Ω  
Typical inside surface 4.0 x 10<sup>9</sup>Ω
- PRINTING:** IPA-resistant ink ensures that bags can be wiped down with cleaning or sterilizing fluids without fear of cross-contamination from printing inks
- QUALITY SYSTEMS:** Manufactured in a facility holding ISO 9001:2008 certification
- SAMPLING & INSPECTION:** In accordance with ISO 2859
- STORAGE INSTRUCTIONS:** Store in a dry, cool place (<30°C) away from direct sunlight
- BAR CODES:** Each size carries a unique bar code on the carton (ITF-14) to allow automatic data entry into Stock Control Systems
- LOT NUMBER:** This is shown on each individual bag and the carton to provide product traceability
- COMPATIBILITY:** ISO Class 4
- PACKAGING:** One coverall per sealed PE bag;  
One sealed PE bag per sealed outer PE bag;  
20 coveralls per carton liner;  
One carton liner per carton (20 coveralls);  
(XXXL & XXXXL 15 coveralls)
- SIZE CHART:**
- | Size   | CHEST             | HEIGHT              |
|--------|-------------------|---------------------|
| XS     | 76-84 (30"-33")   | 158-164 (5'2"-5'4") |
| S      | 84-92 (33"-36")   | 164-170 (5'4"-5'6") |
| M      | 92-100 (36"-39")  | 170-176 (5'6"-5'9") |
| L      | 100-108 (39"-42") | 176-182 (5'9"-6'0") |
| XL     | 108-116 (42"-45") | 182-188 (6'0"-6'2") |
| XXL    | 116-124 (45"-48") | 188-194 (6'2"-6'4") |
| XXXL   | 124-132 (48"-51") | 194-200 (6'4"-6'6") |
| *XXXXL | 132-140 (51"-54") | 200-206 (6'6"-6'8") |
- NOTES:** \*BDCHT-XXXXL  
Non-stock item, minimum order 50 cartons